

Color Selection Guide



COATED METALS GROUP

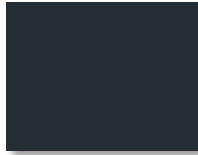
ULTRA-CLAD™ with **COOL** technology.

Cool coating with premium heat-reflective technology from Dura Coat.

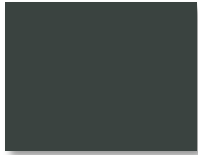
KYNAR 500 or HYLAR 5000 Pre-Finished Steel & Aluminum Flat Sheets & Coil.



Deep Black



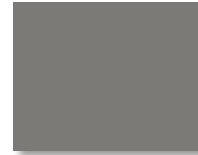
Matte Black



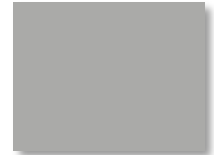
Charcoal Gray



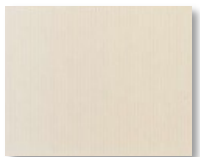
Musket Gray



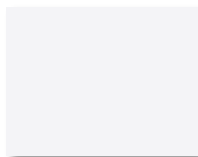
Slate Gray



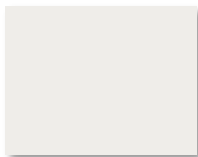
Ash Gray



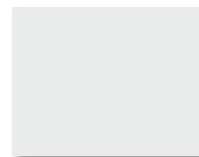
Almond



Bright White



Bone White



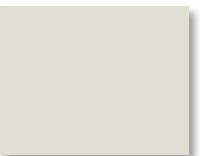
Stone White



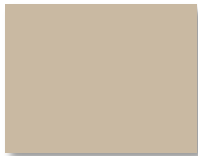
Cityscape



Extra Dark Bronze



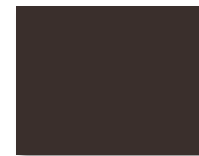
Sandstone



Sierra Tan



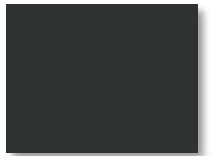
Medium Bronze



Mansard Brown



Burnished Slate



Dark Bronze



Harford Green



Classic Green



Hemlock Green



Teal



Slate Blue



Royal Blue



Regal Red



Colonial Red



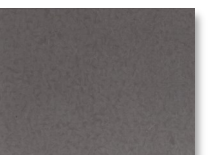
Burgundy



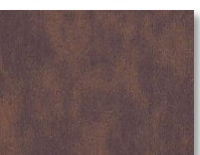
Terra Cotta



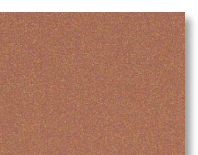
Galvalume Plus



* Vintage



* Western Rust



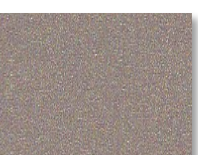
* Copper Penny



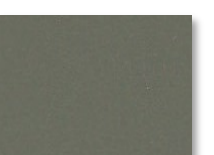
* Weathered Zinc



* Silver



* Champagne



* Aged Copper

*Premium Color

Colors represented on this electronic chart may not exactly match actual material. All colors should be verified using actual metal samples. Mismatch of electronic color representations and actual material shall not be accepted as a cause for rejection.



Stock Availability Matrix

Color Name	ULTRA-COOL RATINGS			G90 Galvanized/AZ50 Galvalume								Aluminum		
	Reflect	Emiss	SRI	22 ga.		24 ga.		26 ga.		26 ga. 3D		28 ga.	0.032	0.040
				48"	40"	48"	40"	48"	40"	48"	42"	48"	48"	
Acrylic Coated Galvalume	N/A	N/A	N/A		•	•	•	•				•		
Aged Copper	35.1%	0.84	36		•	•								
Almond	64.2%	0.84	76	•	•	•						•	•	•
Antique Ivory	N/A	N/A	N/A					•				•		
Ash Gray	51.1%	0.85	58			•		•						
Bone White	70.1%	0.85	85	•	•	•		•				•	•	•
Bright White	67.8%	0.84	81			•								
Burgundy	32.5%	0.84	33		•	•	•	•	•	•				
Burnished Slate	28.1%	0.85	27		•	•	•	•	•	•				
Champagne	39.2%	0.85	42			•								
Charcoal Gray	26.5%	0.85	25	•	•	•	•	•	•	•	•	•	•	•
Cityscape	48.6%	0.85	55			•								
Classic Green	27.1%	0.84	25		•	•	•	•	•	•	•	•		
Colonial Red	29.9%	0.84	29		•	•	•	•	•	•	•	•		
Copper Penny	46.9%	0.85	53		•	•		•						
Dark Bronze	23.8%	0.85	22	•	•	•	•	•	•	•	•	•	•	•
Deep Black	26.7%	0.84	25	•	•	•	•	•						
Extra Dark Bronze	N/A	N/A	N/A		•	•								
Hartford Green	29.9%	0.85	29	•	•	•	•	•	•	•	•	•		
Hemlock Green	36.4%	0.84	38		•	•								
Mansard Brown	27.1%	0.85	26	•	•	•	•	•	•	•	•	•	•	•
Matte Black	26.1%	0.85	25	•	•	•	•	•	•	•	•	•	•	•
Medium Bronze	33.1%	0.85	34	•	•	•	•	•	•	•	•	•	•	•
Musket Gray	34.1%	0.84	35		•	•	•	•	•	•				
Pebble Clay	46.5%	0.84	52					•				•		
Regal Red	39.1%	0.85	42			•								
Royal Blue	29.1%	0.85	29		•	•								
Sandstone	61.9%	0.84	73	•		•								
Sierra Tan	48.2%	0.84	54		•	•		•	•	•	•	•	•	•
Silver	56.2%	0.85	65		•	•								
Slate Blue	31.8%	0.85	32		•	•		•				•		
Slate Gray	38.6%	0.84	41	•	•	•	•	•	•	•	•	•	•	•
Stone White	68.3%	0.85	82			•								
Teal	29.9%	0.85	30		•	•								
Terra Cotta	41.8%	0.84	45			•		•	•	•				
Vintage	30.0%	0.07	22		•	•								
Weathered Zinc	39.6%	0.84	42		•	•								
Western Rust	24.0%	0.87	23		•	•								

Oil canning is an inherent part of light gauge cold formed metal products and is not cause for coil, sheet or panel rejection. Protective film must be removed immediately upon installation. Colors and sizes can change without notice. Additional sizes may be available, please contact your sales representative. Please contact our office for maintenance and cleaning procedures.

Product Description

Ultra-Clad pre-finished metal features Dura Coat Durapon 70% full strength PVDF paint finishes formulated with Cool technology. This high performance product provides the ultimate in resistance against fading and weathering. In addition to our standard colors, custom colors are also available up request.

Color Samples

Colors shown represent the actual colors as accurate as modern printing technology will permit. Colors represented on electronic charts may not match actual material. All colors should be verified using actual metal samples. Mismatch of electronic color representation and actual material shall not be accepted as a cause for rejection. Free metal samples are available upon request.



KYNAR 500 is a registered trademark of ELF Atochem North America, Inc.
 HYLAR 5000 is a registered trademark of Ausimont USA, Inc.
 GALVALUME is registered trademark of BIEC.